

There are many types of bar lines available.

The first staff of music is written on a single line with a treble clef and a common time signature (C). It begins with a C4 quarter note, followed by a D4 quarter note, and then a series of eighth notes: E4, F4, G4, A4, B4, A4, G4, F4, E4. This sequence is followed by a double bar line and a repeat sign. The music then continues with a series of eighth notes: D4, C4, B3, A3, G3, F3, E3, D3, C3, B2, A2, G2, F2, E2, D2, C2, B1, A1, G1, F1, E1, D1, C1, B0, A0, G0, F0, E0, D0, C0, B-1, A-1, G-1, F-1, E-1, D-1, C-1, B-2, A-2, G-2, F-2, E-2, D-2, C-2, B-3, A-3, G-3, F-3, E-3, D-3, C-3, B-4, A-4, G-4, F-4, E-4, D-4, C-4, B-5, A-5, G-5, F-5, E-5, D-5, C-5, B-6, A-6, G-6, F-6, E-6, D-6, C-6, B-7, A-7, G-7, F-7, E-7, D-7, C-7, B-8, A-8, G-8, F-8, E-8, D-8, C-8, B-9, A-9, G-9, F-9, E-9, D-9, C-9, B-10, A-10, G-10, F-10, E-10, D-10, C-10, B-11, A-11, G-11, F-11, E-11, D-11, C-11, B-12, A-12, G-12, F-12, E-12, D-12, C-12, B-13, A-13, G-13, F-13, E-13, D-13, C-13, B-14, A-14, G-14, F-14, E-14, D-14, C-14, B-15, A-15, G-15, F-15, E-15, D-15, C-15, B-16, A-16, G-16, F-16, E-16, D-16, C-16, B-17, A-17, G-17, F-17, E-17, D-17, C-17, B-18, A-18, G-18, F-18, E-18, D-18, C-18, B-19, A-19, G-19, F-19, E-19, D-19, C-19, B-20, A-20, G-20, F-20, E-20, D-20, C-20, B-21, A-21, G-21, F-21, E-21, D-21, C-21, B-22, A-22, G-22, F-22, E-22, D-22, C-22, B-23, A-23, G-23, F-23, E-23, D-23, C-23, B-24, A-24, G-24, F-24, E-24, D-24, C-24, B-25, A-25, G-25, F-25, E-25, D-25, C-25, B-26, A-26, G-26, F-26, E-26, D-26, C-26, B-27, A-27, G-27, F-27, E-27, D-27, C-27, B-28, A-28, G-28, F-28, E-28, D-28, C-28, B-29, A-29, G-29, F-29, E-29, D-29, C-29, B-30, A-30, G-30, F-30, E-30, D-30, C-30, B-31, A-31, G-31, F-31, E-31, D-31, C-31, B-32, A-32, G-32, F-32, E-32, D-32, C-32, B-33, A-33, G-33, F-33, E-33, D-33, C-33, B-34, A-34, G-34, F-34, E-34, D-34, C-34, B-35, A-35, G-35, F-35, E-35, D-35, C-35, B-36, A-36, G-36, F-36, E-36, D-36, C-36, B-37, A-37, G-37, F-37, E-37, D-37, C-37, B-38, A-38, G-38, F-38, E-38, D-38, C-38, B-39, A-39, G-39, F-39, E-39, D-39, C-39, B-40, A-40, G-40, F-40, E-40, D-40, C-40, B-41, A-41, G-41, F-41, E-41, D-41, C-41, B-42, A-42, G-42, F-42, E-42, D-42, C-42, B-43, A-43, G-43, F-43, E-43, D-43, C-43, B-44, A-44, G-44, F-44, E-44, D-44, C-44, B-45, A-45, G-45, F-45, E-45, D-45, C-45, B-46, A-46, G-46, F-46, E-46, D-46, C-46, B-47, A-47, G-47, F-47, E-47, D-47, C-47, B-48, A-48, G-48, F-48, E-48, D-48, C-48, B-49, A-49, G-49, F-49, E-49, D-49, C-49, B-50, A-50, G-50, F-50, E-50, D-50, C-50, B-51, A-51, G-51, F-51, E-51, D-51, C-51, B-52, A-52, G-52, F-52, E-52, D-52, C-52, B-53, A-53, G-53, F-53, E-53, D-53, C-53, B-54, A-54, G-54, F-54, E-54, D-54, C-54, B-55, A-55, G-55, F-55, E-55, D-55, C-55, B-56, A-56, G-56, F-56, E-56, D-56, C-56, B-57, A-57, G-57, F-57, E-57, D-57, C-57, B-58, A-58, G-58, F-58, E-58, D-58, C-58, B-59, A-59, G-59, F-59, E-59, D-59, C-59, B-60, A-60, G-60, F-60, E-60, D-60, C-60, B-61, A-61, G-61, F-61, E-61, D-61, C-61, B-62, A-62, G-62, F-62, E-62, D-62, C-62, B-63, A-63, G-63, F-63, E-63, D-63, C-63, B-64, A-64, G-64, F-64, E-64, D-64, C-64, B-65, A-65, G-65, F-65, E-65, D-65, C-65, B-66, A-66, G-66, F-66, E-66, D-66, C-66, B-67, A-67, G-67, F-67, E-67, D-67, C-67, B-68, A-68, G-68, F-68, E-68, D-68, C-68, B-69, A-69, G-69, F-69, E-69, D-69, C-69, B-70, A-70, G-70, F-70, E-70, D-70, C-70, B-71, A-71, G-71, F-71, E-71, D-71, C-71, B-72, A-72, G-72, F-72, E-72, D-72, C-72, B-73, A-73, G-73, F-73, E-73, D-73, C-73, B-74, A-74, G-74, F-74, E-74, D-74, C-74, B-75, A-75, G-75, F-75, E-75, D-75, C-75, B-76, A-76, G-76, F-76, E-76, D-76, C-76, B-77, A-77, G-77, F-77, E-77, D-77, C-77, B-78, A-78, G-78, F-78, E-78, D-78, C-78, B-79, A-79, G-79, F-79, E-79, D-79, C-79, B-80, A-80, G-80, F-80, E-80, D-80, C-80, B-81, A-81, G-81, F-81, E-81, D-81, C-81, B-82, A-82, G-82, F-82, E-82, D-82, C-82, B-83, A-83, G-83, F-83, E-83, D-83, C-83, B-84, A-84, G-84, F-84, E-84, D-84, C-84, B-85, A-85, G-85, F-85, E-85, D-85, C-85, B-86, A-86, G-86, F-86, E-86, D-86, C-86, B-87, A-87, G-87, F-87, E-87, D-87, C-87, B-88, A-88, G-88, F-88, E-88, D-88, C-88, B-89, A-89, G-89, F-89, E-89, D-89, C-89, B-90, A-90, G-90, F-90, E-90, D-90, C-90, B-91, A-91, G-91, F-91, E-91, D-91, C-91, B-92, A-92, G-92, F-92, E-92, D-92, C-92, B-93, A-93, G-93, F-93, E-93, D-93, C-93, B-94, A-94, G-94, F-94, E-94, D-94, C-94, B-95, A-95, G-95, F-95, E-95, D-95, C-95, B-96, A-96, G-96, F-96, E-96, D-96, C-96, B-97, A-97, G-97, F-97, E-97, D-97, C-97, B-98, A-98, G-98, F-98, E-98, D-98, C-98, B-99, A-99, G-99, F-99, E-99, D-99, C-99, B-100, A-100, G-100, F-100, E-100, D-100, C-100, B-101, A-101, G-101, F-101, E-101, D-101, C-101, B-102, A-102, G-102, F-102, E-102, D-102, C-102, B-103, A-103, G-103, F-103, E-103, D-103, C-103, B-104, A-104, G-104, F-104, E-104, D-104, C-104, B-105, A-105, G-105, F-105, E-105, D-105, C-105, B-106, A-106, G-106, F-106, E-106, D-106, C-106, B-107, A-107, G-107, F-107, E-107, D-107, C-107, B-108, A-108, G-108, F-108, E-108, D-108, C-108, B-109, A-109, G-109, F-109, E-109, D-109, C-109, B-110, A-110, G-110, F-110, E-110, D-110, C-110,

5



A musical staff with a treble clef. The fifth line is highlighted with a thick black bar. To the left of the staff, the number '5' is written. To the right of the staff, there is a double bar line and a single eighth note on the fifth line.

Bar numbers can be printed at regular intervals, inside a box or a circle.

Chord names are generated from a list pitches. The functions which construct these names can be customised. Here are shown Jazz chords, following Ignatzek (pp. 17-18, 1995) and an alternative Jazz chord notation.

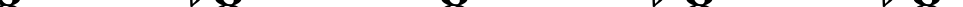
Ignatzek (default)	C	Cm	C+	C ^o
Alternative	C	C ^{b3}	C ^{#5}	C ^{b3 b5}

Alternative



Def	C^7	Cm^7	C^\triangle	C^{o7}	$Cm^{\triangle/b5}$
Alt	C^7	$C^7 b3$	$C^{\#7}$	$C^{b3 b5 b7}$	$C^{b3 b5 \#7}$

Alt 5



Def	$C^{7/\sharp 5}$	Cm^{\triangle}	$C^{\triangle/\sharp 5}$	C^{\emptyset}
Δ^{1+}	$C^7 \sharp 5$	$C^{\flat 3 \sharp 7}$	$C^{\sharp 5 \sharp 7}$	$C^7 \flat 3 \flat 5$

Def	C ⁶	Cm ⁶	C ⁹	Cm ⁹
Alt ₁₄	C ⁶	C ^{b3} 6	C ⁹	C ⁹ b3

Def	Cm ¹³	Cm ¹¹	Cm ^{7/b5/9}	C ^{7/b9}
Alt ₁₈	C ¹³ b3	C ¹¹ b3	C ⁹ b3 b5	C ⁷ b9

Def	C ^{7/#9}	C ¹¹	C ^{7/#11}	C ¹³
Alt ₂₂	C ⁷ #9	C ¹¹	C ⁹ #11	C ¹³

Def	C ^{7/#11/b13}	C ^{7/#5/#9}	C ^{7/#9/#11}	C ^{7/b13}
Alt	C ⁹ #11 b13	C ⁷ #5 #9	C ⁷ #9 #11	C ¹¹ b13

Def	C ^{7/b9/b13}	C ^{7/#11}	C ^{△/9}	C ^{7/b13}
Alt	C ¹¹ b9 b13	C ⁹ #11	C ⁹ #7	C ¹¹ b13

Def	C ^{7/b9/b13}	C ^{7/b9/13}	C ^{△/9}	C ^{△/13}
Alt	C ¹¹ b9 b13	C ¹³ b9	C ⁹ #7	C ¹³ #7

Def	$C^{\triangle \#11}$	$C^{7/b9/13}$	C^{sus4}	$C^{7/sus4}$
Alt ₃₈	$C^9 \#7 \#11$	$C^{13 \flat 9}$	$C^{add4 \ 5}$	$C^{add4 \ 5 \ 7}$

Def	$C^{9/sus4}$	C^{add9}	Cm^{add11}
Alt ₄₂	$C^{add4 \ 5 \ 7 \ 9}$	C^{add9}	$C^{\flat 3} add11$

‘chord-names-languages.ly’

The english naming of chords (default) can be changed to german (`\germanChords` replaces B and Bes to H and B), semi-german (`\semiGermanChords` replaces B and Bes to H and Bb), italian (`\italianChords` uses Do Re Mi Fa Sol La Si), or french (`\frenchChords` replaces Re to Ré).

default	E/D	Cm	B/B	B [#] /B [#]	B ^b /B ^b
german	E/d	Cm	H/h	H [#] /his	B/b
semi-german	E/d	Cm	H/h	H [#] /his	B ^b /b
italian	Mi/Re	Do m	Si/Si	Si [#] /Si [#]	Si ^b /Si ^b
french	Mi/Ré	Do m	Si/Si	Si [#] /Si [#]	Si ^b /Si ^b

‘divisiones.ly’

Divisiones are ancient variants of breathing signs. Choices are `divisioMinima`, `divisioMaior`, `divisioMaxima` and `finalis`, `virgula` and `caesura`.

divisio minima	divisio maior	divisio maxima
----------------	---------------	----------------

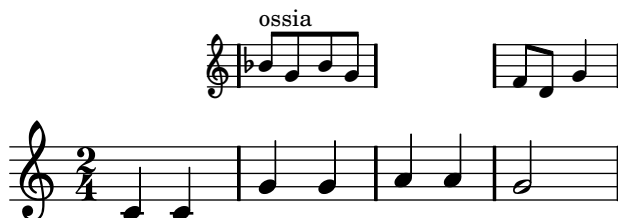
finalis	virgula	caesura
---------	---------	---------

‘font-table.ly’

.notdef	space	
plus	+	comma ,
hyphen	-	period .
zero	0	one 1
two	2	three 3
four	4	five 5
six	6	seven 7
eight	8	nine 9
f	<i>f</i>	m <i>m</i>
p	<i>p</i>	r <i>r</i>
s	<i>s</i>	z <i>z</i>
rests.0	—	rests.1 —
rests.0o	—	rests.1o —
rests.M3		rests.M2
rests.M1	▪	rests.2 ~
rests.2classical	∨	rests.3 ∨
rests.4	∨	rests.5 ∨
rests.6	∨	rests.7 ∨
accidentals.2	#	accidentals.1 #
accidentals.3	##	accidentals.0 #
accidentals.M2	b	accidentals.M1 b
accidentals.M4	bb	accidentals.M3 #
accidentals.4	x	accidentals.rightparen)
accidentals.leftparen	(arrowheads.open.01 >
arrowheads.open.0M1	<	arrowheads.open.11 ^
arrowheads.open.1M1	∨	arrowheads.close.01 >
arrowheads.close.0M1	◀	arrowheads.close.11 ^
arrowheads.close.1M1	▼	dots.dot .
noteheads.uM2	♩	noteheads.dM2 ♩
noteheads.sM1	♩	noteheads.s0 0
noteheads.s1	o	noteheads.s2 •
noteheads.s0diamond	◊	noteheads.s1diamond ◊
noteheads.s2diamond	◊	noteheads.s0triangle ▴
noteheads.d1triangle	▴	noteheads.u1triangle ▴
noteheads.u2triangle	▴	noteheads.d2triangle ▴
noteheads.s0slash	∕	noteheads.s1slash ∕
noteheads.s2slash	/	noteheads.s0cross ∞
noteheads.s1cross	∞	noteheads.s2cross x
noteheads.s2xcircle	⊗	noteheads.s0do △
noteheads.d1do	△	noteheads.u1do △
noteheads.d2do	▲	noteheads.u2do ▲
noteheads.s0re	U	noteheads.u1re U
noteheads.d1re	U	noteheads.u2re U
noteheads.d2re	U	noteheads.s0mi ◊
noteheads.s1mi	◊	noteheads.s2mi ◆
noteheads.u0fa ▽	▽	noteheads.d0fa ▽
noteheads.u1fa ▽	▽	noteheads.d1fa ▽
noteheads.u2fa ▽	▽	noteheads.d2fa ▽

‘ossia.ly’

Ossia fragments can be done with starting and stopping staves.

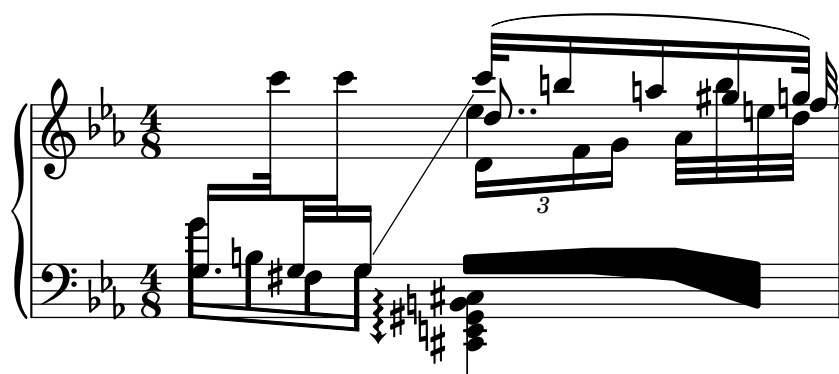


‘screech-boink.ly’

Screech and boink

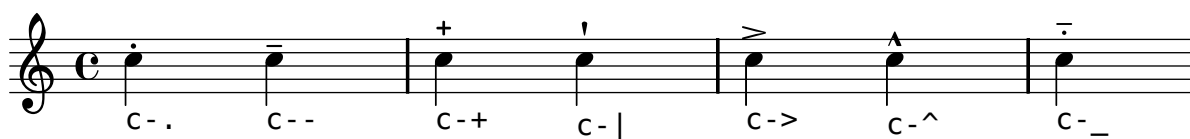
Random complex notation

Han-Wen Nienhuys



‘script-abbreviations.ly’

Some articulations may be entered using an abbreviation.



‘script-chart.ly’

This chart shows all articulations, or scripts, that feta font contains.

